



# Chicago Park District

Chicago, Illinois

## Popular Annual Financial Report

For the Year Ended December 31, 2015



**Children First**

**Built to Last**



**Extra Effort**



**Best Deal in Town**



Prepared by the Chief Financial Officer and the Office of the Comptroller

Rahm Emanuel, Mayor, City of Chicago

Jesse H. Ruiz, President of the Board of Commissioners

Michael P. Kelly, General Superintendent and Chief Executive Officer

Steve Lux, Chief Financial Officer

Cecilia Prado, CPA, Comptroller





# TABLE OF CONTENTS



Commissioner’s Letter.....	1
Comptroller’s Message.....	2
Organizational Structure & Management.....	3
Map of Parks.....	4
Staffed Locations.....	5
Operating Indicators.....	6
CPD Spotlight.....	7
Core Values	
Children First.....	8
Best Deal in Town.....	9
Built to Last.....	10
Extra Effort.....	11
Management’s Discussion & Analysis.....	12-16
Local Economy.....	17
Capital Improvement Projects.....	18
Community Efforts.....	19
Privatized Contracts.....	20
Featured Parks.....	inside back cover
Oz Park	
Contact Us.....	back cover

# COMMISSIONER'S LETTER

Dear Colleagues and Friends,

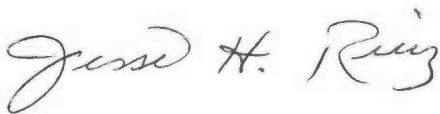
Building on the Chicago Park District's win of the National Recreation and Parks Association's Gold Medal of Excellence in 2014, the year of 2015 proved to be equally outstanding. We've made impressive gains in the overall impact parks have on our communities. Through thoughtful investments and sound planning, we are achieving our goal to ensure that every child, family and neighborhood has access to parks and recreational resources.

As we continue to expand and diversify program options, more and more families are choosing us over private facilities and other competitors. Quality and affordability are key to our success. In fact, in 2015, the Chicago Park District saw more than 378,000 individual program enrollments with considerable increases in learn to swim, gymnastics, football, soccer and special recreation programs. We enjoyed the third season of Night Out in the Parks and celebrated with our first mobile application ("app"). By the close of the season, more than 67,000 patrons downloaded the app for up to the minute information on family focused, cultural events happening in our parks. In 2015, our conservative budgeting provided for strong financial results which are reflected in the general fund. Our expenditures were less than budgeted and most revenues exceeded the budgeted amounts. Due to these positive results, only \$1.0 million of previous fund balance was needed as compared to a budgeted amount of \$4.0 million.

Looking forward, we will continue to identify ways to operate more efficiently and increase revenue to support our parks and Chicago's children. In addition, we will continue to rely on our elected officials as well as individuals and organizations who understand the importance of parks and how they keep us all active and healthy.

Thank you for your interest in the Chicago Park District's 2015 Popular Annual Financial Report.

Sincerely,



**Jesse H. Ruiz**

**President, Board of Commissioners**



**Michael P. Kelly**

**General Superintendent & CEO**



**Pictured from left to right: Commissioner Martin Laird Koldyke, Superintendent Michael P. Kelly, Vice President Avis LaVelle, President Jesse H. Ruiz, Commissioner Erika R. Allen, Commissioner Tim King, Commissioner Donald J. Edwards, Commissioner Juan Salgado**



# **COMPTROLLER'S MESSAGE**

## **Question, what is a PAFR?**

A Popular Annual Financial Report (PAFR) presents Comprehensive Annual Financial Report (CAFR) information in a readily accessible and easy to understand format for the general public. The PAFR provides an overview of the Chicago Park District's financial position, including sources of revenues and expenditures, and economic information about the community. The Government Finance Officers Association of the United States and Canada has given an Award for Outstanding Achievement in Popular Annual Financial Reporting to the Chicago Park District for its PAFR for the fiscal year ended December 31, 2015. This is a prestigious national award recognizing the District with the highest standards for preparation of state and local government popular reports. In order to receive this award, a government must publish a PAFR, the contents of which conform to program standards of creativity, presentation, understandability, and reader appeal. An Award for Outstanding Achievement in Popular Annual Financial Reporting is valid for a period of one year only. We believe our current report, in the spirit of transparency and full disclosure, will also earn this notable recognition.

The data for this PAFR is taken from our CAFR for the fiscal year ended December 31, 2015. It is important to note that this report does not provide all the detailed financial information that is contained in our CAFR. PAFRs are supplements to, not replacements for, CAFRs. The CAFR includes all of the audited financial statements and disclosures and is presented on a Generally Accepted Accounting Principles (GAAP) basis.

The PAFR and CAFR are available on our website at:

<http://www.chicagoparkdistrict.com/departments/finance/comptroller>.

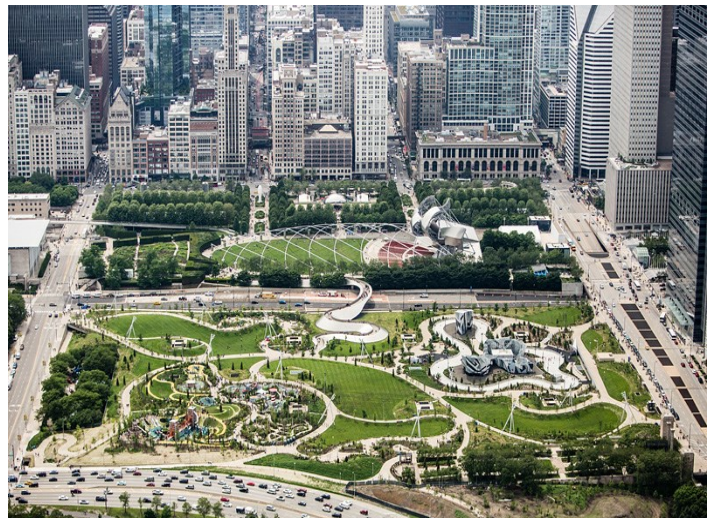
A hardcopy of either report may also be obtained by calling the Office of the Comptroller at (312) 742-4342.

## **Chicago Park District Profile**

In 1934, the Illinois legislature by way of the Park Consolidation Act consolidated 22 separate park districts in the City of Chicago to officially create the District, as it is presently constituted. The District owns 8,325 acres of green space on which rest 590 parks, 239 field houses, zoo and 26 miles of pristine lakefront with running and bike trails as well as 29 beaches, making it the largest municipal park manager in the nation.



**West Ridge Nature Park**



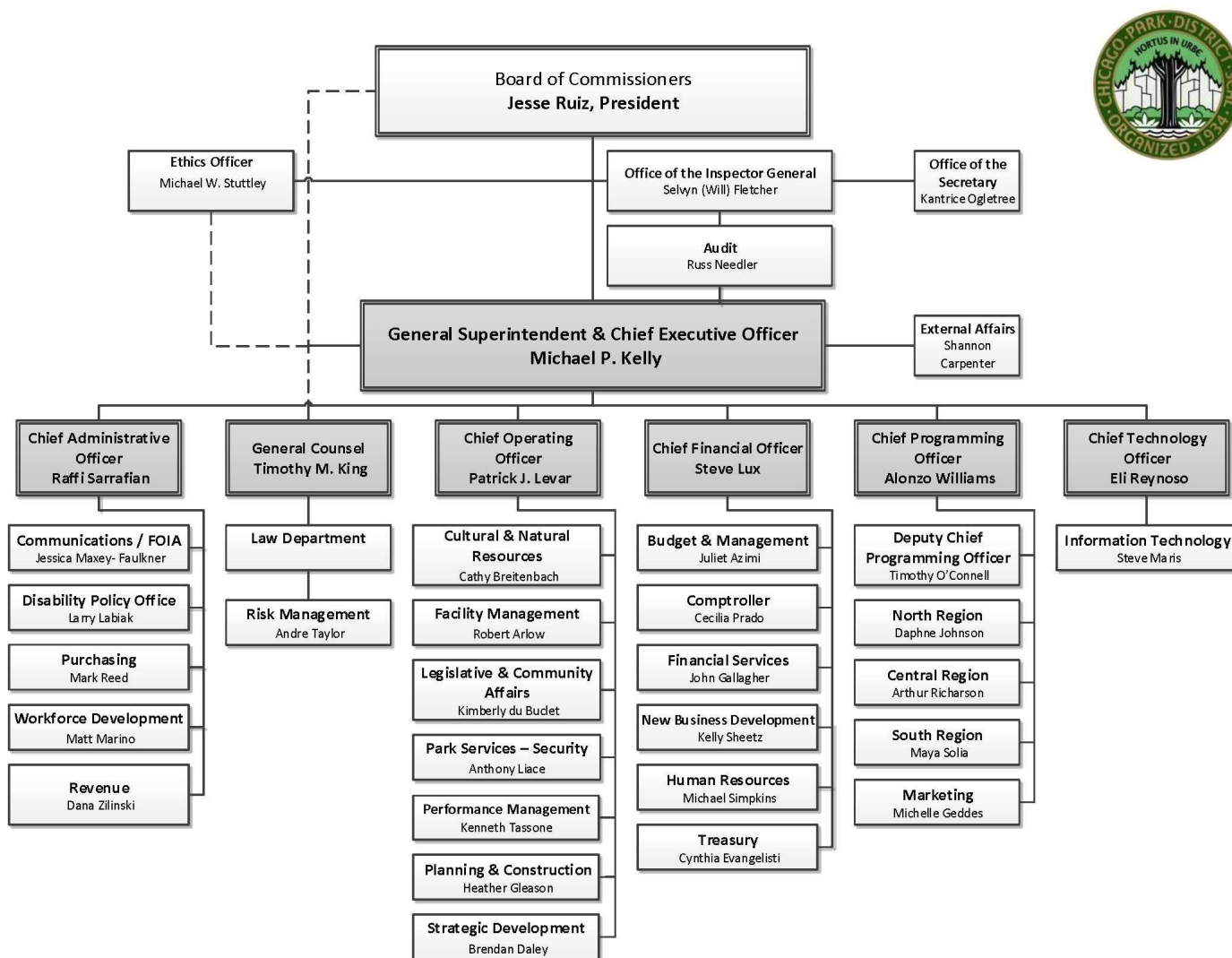
**Maggie Daley Park**

# ORGANIZATIONAL STRUCTURE & MANAGEMENT

The Mayor of the City of Chicago appoints the Park District's seven-member Board, which is its highest authority. The Board is made up of three standing committees under which business is conducted: Administration, Programs and Recreation, and Capital Improvements. The Office of the Secretary serves as the Board's Official record keeper, prepares the Board's minutes and moderates the meetings.

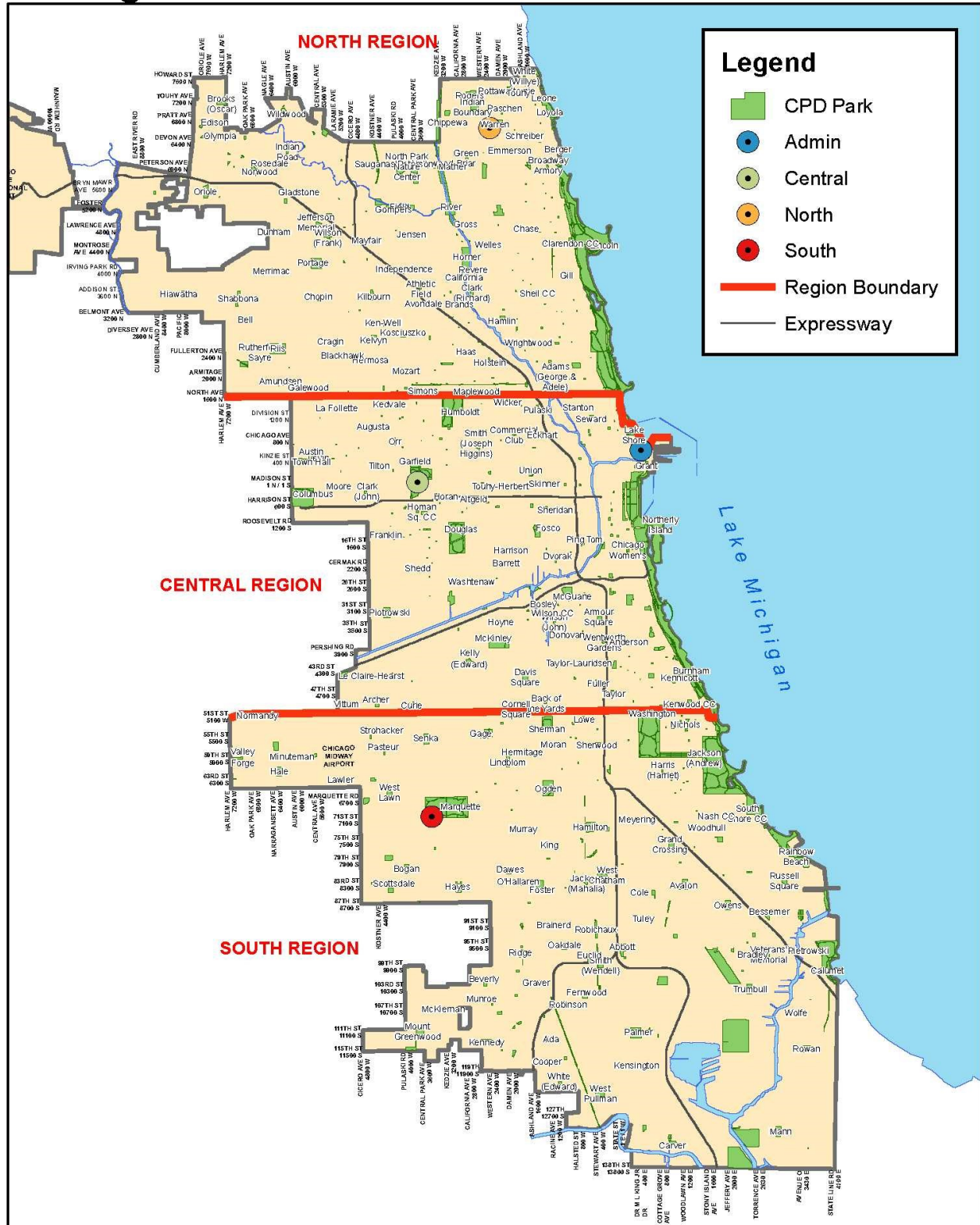
Chicago Park District board meetings take place on the second Wednesday of every month. To obtain more information on meeting locations, dates, and times, please call 312-742-5034 or go to the Chicago Park District website at: <http://www.chicagoparkdistrict.com/departments/board-of-commissioners>

The reporting structure of the Chicago Park District begins with the Board of Commissioners, General Superintendent/CEO and six Chiefs who manage the District's departments. Individual departments and the three regions (North, South, and Central) are each headed by a Director/Region Manager who oversees central administrative and park/regional staff.



# MAP OF PARKS

## Chicago Park District Staffed Facilities



Chicago Park District  
Dept. of Planning & Construction  
November 2014 - JAT



# STAFFED LOCATIONS



**North Region**  
6601 N. Western  
(773) 262-8658

Area 1 Manager	Area 2 Manager	Area 3 Manager	Area 4 Manager	Area 5 Manager	Area 6 Manager
<b>Deb Maddox</b>	<b>Derrick Martin</b>	<b>Gary Kuzmanic</b>	<b>Stacey Anti</b>	<b>Sandra Olson</b>	<b>Erin McGuire</b>
Brooks	Amundsen	Chippewa	Athletic Field	Berger	Adams
Chopin	Bell	Emmerson	Avondale	Broadway Armory	Chase
Dunham	Blackhawk	Green Briar	Brands	Clarendon	Gill
Edgebrook	Cragin	Gross	Clark	Lincoln Park Cult. Ctr	Haas
Edison	Galewood	Hollywood	California	Loyola	Hamlin
Gladstone	Hermosa	Indian Boundary	Eugene Field	Margate	Holstein
Indian Road	Hiawatha	Mather	Gompers	Paschen	Maplewood
Jefferson	Kelvyn	Peterson	Horner	Pottawattomie	Oz
Merrimac	Ken - Well	River	Independence	Schreiber	Sheil
Norwood	Kosciuszko	Roger	Jensen	Touhy	Trebes
Olympia	Mozart	Warren	Kilbourn	White (Willye)	Wrightwood
Oriole	Riis	Welles	Mayfair		
Portage	Rutherford Square	Winnemac	Paul Revere		
Rosedale	Shabbona		Sauganash		
Wildwood	Simons				
Wilson					



**Central Region**  
100 S. Central  
Park Ave  
(312) 746-5962

Area 1 Manager	Area 2 Manager	Area 3 Manager	Area 4	Area 5 Manager	Area 6 Manager
<b>Marilyn Morales</b>	<b>Derrick Faulkner</b>	<b>Elizabeth Garza</b>	<b>Dan Puente</b>	<b>Michael Hixenbaugh</b>	<b>Jackie Payne</b>
Augusta	Altgeld	Daley Bicentennial	Archer	Armour Square	Anderson
Commercial	Austin Town Hall	Eckhart	Cornell Square	Bosley	Chicago's Women
Humboldt	Clark	Fosco	Curie	Donovan	Dvorak
Kedvale	Columbus	Harrison	Davis Square	Fuller	Haines
LaFollette	Douglas	Lake Shore	Kelly	McGuane	Kennicott
Pulaski	Franklin	Northerly Island	LeClaire Courts	McKinley	Kenwood
Smith	Garfield	Seward	Piotrowski	Ping Tom Park	Lake Meadows
Wicker	Homan Square	Sheridan	Shedd	Taylor- Lauridsen	Mandrake
	Moore	Skinner	Vittum	Wentworth	Nat. Teacher's Academy
	Summer	Stanton	Washtenaw	Wilson	Taylor
	Tilton	Union		Wilson CC	Williams



**South Region**  
3344 W. 71st Street  
(312) 747-7661

Area 1 Manager	Area 2 Manager	Area 3 Manager	Area 4 Manager	Area 5 Manager	Area 6 Manager
<b>Kathy Voltz</b>	<b>Phil Hampton</b>	<b>Farah Tunks</b>	<b>Ed Affolter</b>	<b>Sabrina Steward</b>	<b>Anita Gilkey</b>
Bogan	Foster	Cole	Beverly	Abbot	Avalon
Dooley	Gage	Dyett Rec. Ctr	Dawes	Ada	Bessemer
Durkin	Hamilton	Harris	Graver	Brainerd	Bradley
Hale	Hermitage	Jackson	Hayes	Cooper	Calumet
Lawler	Lindblom	Meyering	Kennedy	Ed White	Carver
Michael Madigan Sr.	Lowe	Midway Plaisance	Marquette	Eudid	Gately
Minuteman	Martin Luther King Jr.	Nash	McKieman	Fernwood	Jesse Owens
Normandy	Moran	Nichols	Mt. Greenwood	Grand Crossing	Mann
Pasteur	Murray	Roseblum/Mann	Munroe	Jackie Robinson	Pietrowski
Rainey	Ogden	South Shore Cult. Ctr	O'Hallaren	Palmer	Rainbow Beach
Scottsdale	Sherman	Washington	Oakdale	Robichaux	Rowan
Solorio Academy /Senka	Sherwood	Washington Refectory	Ridge	Tuley	Russell Square
Strohacker	West Chatman	Woodhull	Tarkington	Wendell Smith	Trumbull
Valley Forge				West Pullman	Veteran's Memorial
Wentworth					Wolfe
West Lawn					

# OPERATING INDICATORS

## Summer Food Program Meals Served

Central Region:	2014	2015
Total meals	308,921	333,188
Total sites	64	64
Averaged meals served per site	4,827	5,206
North Region:		
Total meals	339,439	355,416
Total sites	75	73
Averaged meals served per site	4,526	4,869
South Region:		
Total meals	342,766	358,047
Total sites	75	74
Average meals served per site	4,570	4,838



## Facilities functions—(work orders)

	2014	2015
Brickwork	114	68
Carpentry	3,994	4,276
Cement and asphalt repair	113	74
Equipment repairs	523	579
Equipment requests	489	988
Erecting	576	461
General cleaning	84	97
Inside electric	4,723	3,201
Iron work	564	741
Mechanical	340	481
Moving/hauling	1,714	1,472
Outside electric	2,557	1,926
Painting	1,873	2,701
Plastering/painting	97	79
Playground repair	2,237	1,806
Plumbing repair	3,895	5,004
Roofing repair	378	212
Total work orders completed	24,271	24,166
Total # of work orders	26,497	25,419
Percentage completed	92%	95%



## Employees by Area

	Year Round 2014	Year round & seasonal 2014	Year Round 2015	Year round & seasonal 2015
Administration	657	1,479	695	1,460
Beaches and pools	287	1,009	288	954
Landscape	241	774	233	724
Security	329	329	291	296
North	497	1,215	486	1,208
Central	448	929	500	943
South	525	1,073	498	1,075
Total	2,984	6,808	2,991	6,660

## Park and Region Programming

	2014	2015
Total # of Movies in the Park	214	200
Total # of Concerts in the Park	194	509
Performances at Theatre on the Lake	31	49
Number of Theater Companies	22	17
Youth registrations	146,808	163,789
Total registrations	340,661	354,032
Total online registrations	122,733	142,322
Percentage of online registrations to total registrations	40.20%	36.03%

## Department of Natural Resources functions

	2014	2015
<b>Landscape Operations:</b>		
Mowing (1)	7,171	7,171
Cleaning (1)	7,727	7,727
Assigned Staff	206	206
<b>Waste Management:</b>		
Contractor-Normal Waste Pickup (2)	6,349	6,199
Contractor- Recyclables (2)	1,221	902
CPD (Lakefront Only)- Normal Waste Pickup (2)	1,671	1,472
CPD (Lakefront Only)- Recyclables (2)	810	845
Herbaceous Organic Waste	2,190	2,610
<b>Forestry:</b>		
Forestry – Tree removals	5,057	2,434
Forestry – Pruning/Trimming	10,248	9,538
Tree Debris Pickup	1,402	3,696
Stump Removals	2,829	2,434
<b>Trees and Floral:</b>		
Trees Planted	4,188	3,299
#Parks	94	85
Shrubs Planted	1,300	259
#Parks	22	6
Perennials Planted	230,000	2,240
#Parks	28	6
Annuals Planted	325,000	89,000
#Parks	26	20
Bulbs Planted	20,000	2,500
#Parks	11	1
Sod (3)	75,250	66,615
Snow removal is performed by regularly assigned staff for all snow events each year.		
(1) Amounts in acres; mowing acreage is estimated		
(2) Amount in tons		
(3) Amounts in yards		



# CPD SPOTLIGHT

## **T.I.P. Fest Teens in the Park**



The Chicago Park District kicked off the summer with its inaugural Teens in the Park (T.I.P.) Fest at Northerly Island. Musical performances included Donnie, Trumpet, DLow, Logan, DJ Chante', YCA poets from Louder Than A Bomb Festival, Open Mike Kids and more. T.I.P. Fest featured interactive tents with a variety of experiential learning activities like graffiti art, break dancing, jewelry making, fashion design and digital media. T.I.P. Fest brought together teens from across Chicago for a one-of-a-kind concert showcasing exciting talent and opportunities in our great city.



## **Toddlers Tunes and Turtles**



Toddler Tunes and Turtles is a free outdoor nature program where families enjoy the park together. The Park District provides animal experts that bring a variety of live animals including frogs, snakes, birds, and of course, turtles to the park. Musicians sing family-friendly music to eager crowds. Instruments are provided for the kids to play with, puzzles, books, blocks, fishing and more! A star feature is nature-free play which is proven to help children develop mentally as they build forts out of sticks, touch pine cones or smell cinnamon bark.



## **Senior Fun in the Park**

Chicago Park District seniors partake in a variety of fun-filled events organized in their local parks. Featured is the Senior Prom and Senior 70s Disco Luncheon! We have some cool seniors in park programs.



### **Other Programs offered by the Chicago Park District**

**\*Check Park District's website for more programs**

#### **Aquatics**

Lessons  
Sailing  
Fitness

#### **Camps**

Sports  
General Interest  
Special Interest

#### **Culture and Arts**

Creative Writing  
Dance  
Drawing

#### **Wellness**

Fitness  
Nutrition  
Walking

#### **General Events**

Banquets  
Community Meetings  
Festival

#### **Gymnastics**

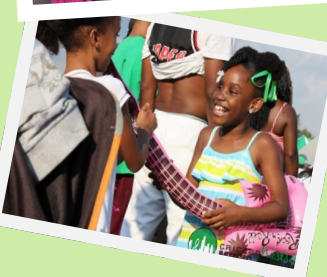
Competitive  
Recreational  
Tumbling

#### **Sports**

Boxing  
Bowling  
Basketball  
Cheerleading  
Hockey  
Racquetball  
Rugby



# CHILDREN FIRST





## Best Deal in Town

**Park for a Pilates class** began on the 4th of July Independence Day. Hundreds of people came by with their yoga mats to Millennium Park for a pilates class provided by the Chicago Park District Wellness Team. Participants got their workout out of the way early, many of them taking quick breaks to snap pictures of the beautiful Great Lawn, which was filled with people exercising from front to back. The cues from Wellness Instructors Paulina Rodak and Briana Rowan were easily heard throughout the lawn. There also was live music to provide a nice soundtrack for the workout.



**Inferno Mobile Recording Studio** provides youth and community with the tools to create self-authored digital media experiences. Inferno travels citywide providing a safe, positive, collaborative environment to imagine, experiment, and play with digital media. In addition to its ongoing partnerships with the TRACE and Arts XIII programs for teens and pre-teens, Inferno offers participants of all ages and abilities the opportunities and training to produce socially conscious, original sound and image creations relevant to young people's lives now. Participants are encouraged to be active producers of digital content rather than passive consumers through active listening, creative experimentation, collaboration, and discussion. Inferno aims to de-mystify what it means to be producers of media and documentarians. Comprised of mostly self-taught instructors, Inferno promotes self-education as an empowering, lifelong and life-changing skill that all people can utilize.



### **Classical Campers Field Trip at Grant Park Music Festival:**



Each summer, Grant Park Music Festival invites parks for a unique field trip opportunity to explore the sounds of classical music in a fun and interactive environment. Buses and healthy snacks are provided. The day includes:

- Learning about the Sights and Sounds of the Symphony through hands-on musical activities and storytelling.
- Exploring Art and Architecture within beautiful Millennium Park.
- Interactive play with real percussion for all campers



# *BUILT TO LAST*



Completed in 2015, **Kerry Wood Field in Clark Park** is a baseball stadium that includes seating for 1,250 spectators and fans, and is the first diamond on the north side of Chicago to meet Illinois High School Association standards. The field will be used by Chicago public high schools citywide throughout the high school baseball season during and after school hours. The Park District will use the field for recreational leagues and use by the general public. The Chicago Cubs, Chicago Cubs Charities, Wood Family Foundation, City of Chicago, Chicago Park District, Chicago Public Schools and Turner Construction all contributed to make the \$5 million stadium project possible.



**Oz Park** was officially named, in 1976, in honor of Lyman Frank Baum (1856-1919), the author of *The Wonderful Wizard of Oz*. Baum settled in Chicago in 1891 several miles west of what is now Oz Park. Having begun writing children's books at age 41, Baum wrote more than 60 books, including 14 Oz books, by the end of his life. In 1939, the production of an MGM movie, *The Wizard of Oz*, immortalized Baum's classic work of fiction. In October 1995, the Cowardly Lion was installed at Oz Park and in Spring 2007, Dorothy & Toto joined.



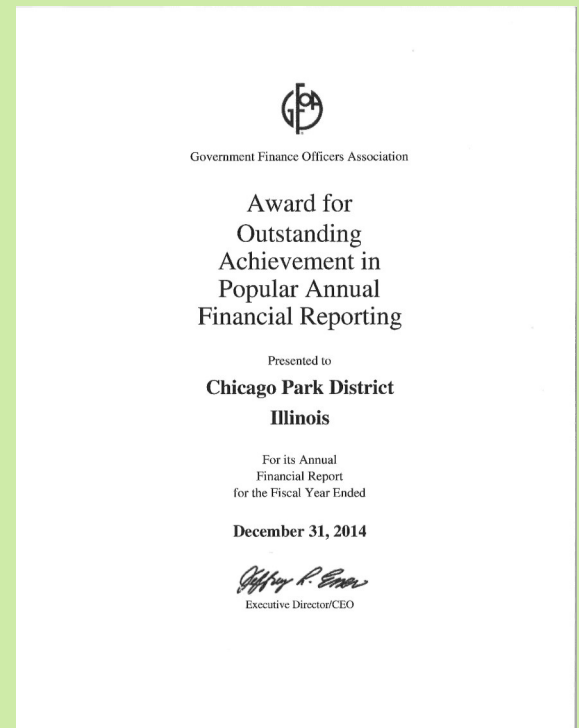
Edward Kemeys (1843–1907) originally produced massive plaster versions of this pair of sculptural bison for the 1893 World's Columbian Exposition in Jackson Park. Kemeys, who also sculpted the *Lions* in front of the Art Institute of Chicago, was famous for depicting wild animals as they might have appeared in their natural settings.

In 1909 when Jens Jensen, the West Park Commission's General Superintendent and Chief Landscape Architect, launched an outdoor art exhibition in Garfield Park, he placed smaller, life-sized plaster versions of the *World's Fair Bison* at the entrance to that park's formal garden facing S. Hamlin Boulevard. Two years later, the West Park Commissioners hired Jules Bercham to recast the sculptures in bronze. The bronze *World's Fair Bison* remained in their Garfield Park location for only a few years. By the summer of 1915, they had been moved to their current setting flanking entrance to **Humboldt Park's** formal garden.



## GFOA Award

The Government Finance Officers Association (GFOA) has awarded the Chicago Park District the *Award for Outstanding Achievement in Popular Annual Financial Reporting* in 2014. This is a prestigious national award recognizing conformance with the highest standards for preparation of state and local government popular reports. The Chicago Park District's Comptroller's Office was also awarded GFOA's Certificate of Achievement for Excellence in Financial Reporting every year since 2006. The Office of Budget and Management received GFOA's Distinguished Budget Presentation Award for all of its budgets since 2009.



## Mobile App

The Chicago Park District launched its first mobile app in 2015 to showcase all of the arts and cultural programming under the Night Out In the Parks series. Users of the application get access to thousands of free year-round programming events. The app achieved almost 100 thousand downloads within its first year, making the My Chi Parks app the most downloaded municipal app in the country!

## CAPRA Accreditation

The Chicago Park District has been granted accreditation for standards of excellence in quality and efficiency by the Commission for Accreditation of Park and Recreation Agencies (CAPRA). CAPRA acknowledges that the Chicago Park District has fulfilled requirements exemplifying its commitment to serving its patrons, employees, volunteers and communities. "The City of Chicago's incredible park system functions as a catalyst that keeps our community connected through recreation, cultural, and nature," said Mayor Rahm Emanuel. "This CAPRA accreditation acknowledges and underscores our city's commitment to parks and our unwavering efforts to improve the quality of life for all, residents and visitors alike."

# MANAGEMENT'S DISCUSSION & ANALYSIS

The Management's Discussion and Analysis offers readers a narrative overview and analysis of the financial activities of the District for the year ended December 31, 2015. Each year, the District produces a Comprehensive Annual Financial Report (CAFR). The CAFR is prepared using a reporting combination of both government-wide financial statements and fund financial statements. Our financial statements consist of three major components:

- ◆ **Government-wide financial statements** include the Statement of Net Position and the Statement of Activities, which provide an aggregate and long-term view of the District's finances. The government-wide financial statements are designed to provide readers with a broad overview of the District's finances in a manner similar to private sector companies.
- ◆ **Fund financial statements** include the Balance Sheet and Statement of Revenue, Expenditures and Changes in Fund Balances. The "fund-level" statements give a more detailed view of the revenues and expenditures and show how well the District has performed in its major funds.
- ◆ **Notes to the basic financial statements** provide additional information that is essential to a full understanding of the data provided in the government-wide and fund financial statements.

## GOVERNMENT-WIDE OVERALL FINANCIAL ANALYSIS

The **Statement of Net Position** presents financial information on all of the District's assets, deferred outflows, and liabilities and resulting net position. The following is a summary as of December 31, 2015 and 2014 (amounts are in millions of dollars).

	2015	2014	Increase (Decrease)	Percentage Increase (Decrease)
<b>Assets:</b>				
Current and other assets	\$ 595	\$ 623	(28)	(4.5) %
Capital assets	2,050	1,978	72	3.6
Total assets	2,645	2,601	44	1.7
<b>Deferred Outflows of Resources:</b>				
Deferred amount on refunding	8	8	0	0.0
Deferred pension outflows	37	0	37	--
Total deferred outflows	45	8	37	462.5
<b>Liabilities:</b>				
Long-term obligations	1,446	1,090	356	32.7
Other liabilities	261	281	(20)	(7.1)
Total liabilities	1,707	1,371	336	24.5
<b>Net position:</b>				
Net investment in capital assets	1,185	1,127	58	5.1
Restricted	164	132	32	24.2
Unrestricted	(366)	(21)	(345)	1,642.9
Total net position	\$ 983	\$ 1,238	(255)	(20.6) %

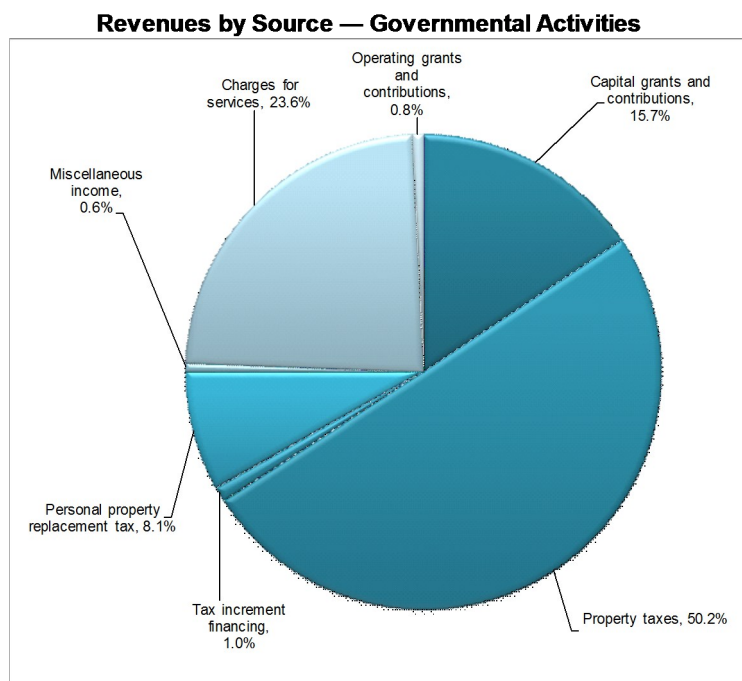
At December 31, 2015, the total of assets and deferred outflows of resources of the District were \$2.69 billion and exceeded liabilities by \$983 million (net position). Of this amount, \$1.19 billion is net investment in capital assets. Capital assets including land, buildings and equipment ended the year with a balance of \$2.05 billion, net of accumulated depreciation. This is an increase of nearly \$72 million over 2014. Total capital outlay for 2015 was \$89.1 million in comparison to the \$144.5 million spent on capital projects in 2014.



# MANAGEMENT'S DISCUSSION & ANALYSIS

The District's total net position decreased by approximately \$255 million from 2014, primarily as a result of the decrease in unrestricted net assets of \$345 million of which a significant portion is attributable to implementation of a new accounting standard related to pension liability reporting. The decrease was offset by an increase in capital assets of \$72 million of which a significant portion came from federal, state and local grants.

**Net Position** over time may serve as a useful indicator of a government's financial position. In the case of District, assets and deferred outflows of resources exceeded liabilities by \$983 million at December 31, 2015. The greatest portion of the District's net position (120.6% or \$1,185 million), reflects its investment in capital assets, less any related outstanding debt (net of deferred outflows of resources) that was used to acquire those assets. The District uses these capital assets to provide a variety of services, and accordingly these assets are not available for future spending. Although the District's investment in capital assets is reported net of related debt, it should be noted that the resources used to repay this debt must be provided from other sources, since the capital assets themselves cannot be used to liquidate these liabilities. An additional portion of the District's net position (16.7% or \$164 million), represents resources that are subject to external restrictions on how they may be used. The remaining balance is an unrestricted deficit of \$366 million.



**Revenues** from all governmental activities in 2015 were \$524million. This reflects an increase of \$11 million from 2014. This change is due to the following:

- ◆ **Charges for Services** increased by \$12 million as a result of increased events/revenues at Soldier Field (\$6 million), and participation in new activities such as Maggie Daley climbing wall and Morgan Park Sports Center gymnastics and ice rink (\$3 million).
- ◆ **Tax Increment Financing** increased by \$1 million.
- ◆ Revenue increases were offset by a decrease in **Personal Property Replacement Tax** of \$2 million.

**Expenses** for governmental activities in 2015 were \$469 million. This reflects an increase of \$14 million from 2014. This change is due to the following:

- ◆ **Personnel Costs** increased by \$4 million, primarily due to increases in programming during the year.
- ◆ **Contractual Services** increased by \$8 million, primarily due to an increase in Soldier Field events and the expenses associated with increased programs (Night Out in the Parks).

# MANAGEMENT'S DISCUSSION & ANALYSIS

## FUND FINANCIAL STATEMENT AND ANALYSIS

The fund financial statements are more familiar to readers of the traditional Comprehensive Annual Financial Report (CAFR). Major funds are presented individually. Non-major governmental funds are combined in separate schedules. The District's sources (revenues) and uses (expenditures) of resources focus on the District's ability to finance operations in the short-term.

The District maintains 9 individual governmental funds of which 5 are major. The five major governmental funds are as follow: 1) General Fund, 2) Bond Debt Service Fund, 3) Park Improvements Fund, 4) Garage Revenue Capital Improvements Fund and 5) Federal, State and Local Grants Funds. Data from the other four governmental funds are combined into a single schedule. The total revenue from all funds from the last five years is shown below.

**Revenue by Source—All Funds from 2011 through 2015**  
(Amounts are in thousands of dollars)

Revenue Source	2011	2012	2013	2014	2015	Increase (Decrease) from 2014
Property taxes	\$ 301,147	261,320	236,145	262,333	261,146	(1,187)
Tax increment financing	-	5,970	2,740	3,885	5,086	1,201
Personal property replacement tax	41,340	40,052	45,716	44,601	42,602	(1,999)
Rental of Soldier Field	27,880	29,824	34,554	36,036	42,418	6,382
Harbor fees	22,456	23,273	23,466	23,625	23,850	225
Recreational activities (net of discounts)	22,023	13,394	12,579	13,375	13,601	226
Donations and grant income	15,361	27,654	78,383	59,345	43,515	(15,830)
Other user charges	6,656	13,191	11,605	1,740	4,586	2,846
Golf course fees	4,782	5,163	5,206	4,900	5,308	408
Concessions	4,387	4,760	4,519	3,529	3,726	197
Rental of other property	2,421	860	1,189	1,399	1,060	(339)
Investment income	379	428	144	212	522	310
Parking fees	2,828	3,516	3,750	4,146	4,768	622
Miscellaneous	1,051	1,606	2,763	1,344	1,597	253
Northerly Island	703	1,007	1,207	1,651	1,211	(440)
Permits	-	-	-	12,396	14,173	1,777
<b>Totals</b>	<b>\$ 453,414</b>	<b>432,018</b>	<b>463,966</b>	<b>474,517</b>	<b>469,169</b>	<b>(5,348)</b>

### Notes

- ◆ **Tax increment financing** was reported together with property taxes in 2011 and prior.
- ◆ **Permits** were reported under "other user charges" in 2013 and prior years.

Overall, revenue decreased by approximately \$5.3 million. This was primarily a result of a donations and grant income decrease of \$15.9 million, mostly due to timing differences related to the receipt of funds. This decrease was offset by an increase in rental of Soldier Field of \$6.4 million, and an increase of other user charges of \$2.8 million in comparison to 2014.

# MANAGEMENT'S DISCUSSION & ANALYSIS

## Expenditures by Function—All Funds from 2011 through 2015 (Amounts are in thousands of dollars)

Expenditure Function		2011	2012	2013	2014	2015	Increase (Decrease) from 2014
Park operations and maintenance	\$	107,994	97,169	104,591	110,775	114,757	3,982
Recreation programs		81,898	92,920	98,628	104,632	107,805	3,173
Special services		73,531	71,581	72,234	74,495	88,299	13,804
General and administrative		50,827	46,746	44,167	38,535	40,628	2,093
Capital outlay		132,610	109,248	115,812	144,507	89,121	(55,386)
Debt Service: Principal		46,065	49,994	46,094	51,716	38,924	(12,792)
Debt Service: Interest		43,002	42,026	41,549	36,673	41,951	5,278
Debt Service: Cost of issuance and other		1,449	-	1,012	1,715	1,322	(393)
Totals Expenditures		537,376	509,684	524,087	563,048	522,807	(40,241)
Total Revenues		453,414	432,018	463,966	474,517	469,169	5,348
Deficiency of revenues over expenditures	\$	(83,962)	(77,666)	(60,121)	(88,531)	(53,638)	45,589

The District's governmental funds reported combined ending fund balances of \$285.1 million, a decrease of \$6.5 million from the prior year amount of \$291.6 million. Approximately (0.6)% of this amount (\$1.8 million) constitutes *unassigned fund deficit*. The remainder of the balance is not in a spendable form (\$1.5 million *nonspendable*), restricted for particular purpose (\$75.4 million *restricted*), committed for particular purposes (\$126.8 million *committed*), or assigned for particular purpose (\$83.2 million *assigned*).

- The General Fund is the primary operating fund of the District and reported an ending fund balance of \$203.5 million. This includes a \$96 million balance from working cash balances. A fund balance reserve policy was established on January 28, 2009, to require a minimum balance in the amount of \$85 million.
- In the General Fund, revenue totaled \$300.3 million and expenditures totaled \$301.5 million. This resulted in a decrease of fund balance of \$1.1 million in the General Fund from \$204.6 million at the end of 2014 to \$203.4 million at December 31, 2015.

### Significant Notes To The Basic Financial Statements (for complete Notes to Basic Financial Statements see the Comprehensive Annual Financial Report)

- On January 7, 2014, Public Act 98-0622 was signed into law, changing the Retirement Fund's provision including funding, retirement age, automatic annual increases and duty disability effective January 1, 2015. During 2015 the Retirement Fund was served a summons and complaint, which challenges the constitutionality of Public Act 98-0622.
- In April 2016, the Illinois Department of Revenue (IDOR) informed the District that as a result of an error in the allocation calculation of the personal property replacement tax, distributions made in 2014 and 2015 had been overstated. The estimated impact to the Park District is approximately \$5.5 million. IDOR intends to recoup the excess contributions over a two year period beginning in January 2017. IDOR has requested a review of the calculations by the State's Auditor General.



# MANAGEMENT'S DISCUSSION & ANALYSIS

## KEY DEFINITIONS

**Assets**—property owned; for example, cash, investments, inventory and accounts receivable.

**Capital Asset**—the District's capital asset includes land, works of art and historical collections, construction in process, infrastructure, site improvements, harbor and harbor improvements, stadium and stadium improvements and equipment.

**Debt Service**—governmental fund type used to account for accumulations of resources that are restricted, committed, or assigned to expenditure for principal and interest.

**Deferred Outflows**—a use of net assets that is applicable to a future reporting period.

**Depreciation**—decrease in value of asset. Usually the cost of an asset allocated over the estimated useful life.

**GASB 68**— "*GASB Statement No. 68, Accounting and Financial Reporting for Pensions, an Amendment of GASB Statement No. 27,*" is the official accounting guidance which aims to improve accounting and reporting by state and local governments for pensions.

**General fund**—one of the five governmental fund types. The General Fund typically serves as the chief operating fund of a government and is used to account for all financial resources except those required to be accounted for in another fund.

**Governmental activities**—activities generally financed through taxes, intergovernmental revenues and other non-exchange revenues. The activities are usually recorded in the governmental funds.

**Governmental funds**—funds generally used to account for tax—supported activities. There are five different types of government funds:

1. General Fund
2. Special Revenue Fund
3. Debt Service Fund
4. Capital Projects Fund
5. Permanent Fund

**Liabilities**—debt or money owed.

**Tax Increment Financing**—revenue source from incremental increases in property tax revenues, resulting from redevelopment.

# LOCAL ECONOMY

## Business Environment

Chicago continues to enjoy one of the most diverse economies in the nation, with no single sector employing more than 18 percent of the City's workforce. In fact, professional and business services now comprise the largest sector of Chicago's workforce which demonstrates the city's conversion from a manufacturing base. This diversity produces fiscal stability from mature industries and promotes the growth of emerging industries in technology, tourism and biotech and life sciences.

## Education

The Chicago central business district is home to over 65,000 college students which provides companies with direct access to a talented work force. In fact, 33 percent of Chicagoans have a college degree.

## Employment

The Chicago economy added over 16,800 jobs in 2015, led by the leisure and hospitality sector. Unemployment in Chicago has decreased from 7.8 percent to 6.4 percent. This has led to a 15-year record low in downtown office vacancy. The technology sector has also increased as a result of a 5.8 percent increase in startup funding which has helped produce numerous patents issued in Chicago. The number of major expansions in the Chicago area increased by 12.8 percent, from 624 expansions in 2014 to 704 in 2015. This increase made Chicago's ranking as "Top Metro" in the US for corporate investment for the third consecutive year by Site Selection Magazine.

## Tourism

Tourism has been an important part of Chicago's economy and 2015 was no different with over 50 million visitors coming to Chicago. Business, convention and leisure travelers are drawn by the City's numerous cultural and recreational attractions, professional sports teams, festivals, museums, parks, restaurants and much more. As a result of the strong tourism, the average hotel occupancy was 75 percent in 2015 and 2014.



# ***CAPITAL IMPROVEMENT PROJECTS***



**Morgan Park Sports Center** is a gleaming new sports complex located in the Morgan Park community at 115th Street and Western Ave. Features include an indoor NHL-size ice rink arena with a seating capacity for 1,200 spectators, a state-of-the-art gymnastics center and a fitness studio. Other amenities include community rooms and locker rooms with showers. Programs include gymnastics, ice skating and hockey.

**Lindblom Park** Located in the West Englewood community, Lindblom Park totals 17.76 acres and features a gymnasium, fitness center, an Olympic power lifting center, and multi-purpose rooms. Green features of our facility include a Harvest Garden. Outside, the park offers baseball, softball, football, and soccer fields, a swimming pool, basketball and tennis courts, walking path and picnic area. During the summer, youth participate in the Chicago Park District's popular six-week day camp and other specialty programs, including Cubs Care Baseball and Tennis Camp. In addition to programs, Lindblom Park hosts fun special events throughout the year for the entire family, such as the Park Showcase and Juneteenth Celebration.



**The 606 (Bloomingdale Trail and Park)** features six ground-level parks, a wheel-friendly event plaza, an observatory, various art installations, educational programming and other amenities. The 606 now provides an urban oasis for the 80,000 people, including 20,000 children, who live within a 10-minute walk of its borders. The 606 serves as a community connector for the Bucktown, Wicker Park, Logan Square, and Humboldt Park neighborhoods, turning the physical

barrier of old railroad embankments into a unifying park and elevated trail system.



# COMMUNITY EFFORTS

## Advisory Councils

An advisory council is a voluntary group of individuals who meet on a regular basis to support the effective functioning of a park. The Chicago Park District has about 200 registered Park Advisory Councils (PACs). Anyone interested in joining or forming a PAC can contact the local park supervisor.

## Nature Area Volunteer Stewardship Program

The Volunteer steward works collaboratively with District staff and contractors to protect, maintain, and restore the natural integrity of their adopted nature area. A volunteer steward coordinates and oversees the volunteer management and restoration of a Chicago Park District nature area. Benefits of becoming a volunteer steward include learning about native Illinois flora and fauna, gaining hands on experience with ecological restoration, developing new leadership skills, and working with volunteers to enhance Chicago's nature areas.

For more information, visit:  
[www.chicagoparkdistrict.com/jobs.volunteering/nature](http://www.chicagoparkdistrict.com/jobs.volunteering/nature)



The Chicago Parks Foundation was created in 2012 as an avenue to raise funds in support of the programs and facilities of the Chicago Park District.

For more information visit:  
[www.chicagoparksfoundation.org](http://www.chicagoparksfoundation.org)

## Volunteer Program

Volunteering opportunities exist for every interest and level of time commitment including:

- ♦ One-day options (corporate/group, environmental stewardship days, special events)
- ♦ Longer-term options (coaching and sport instruction, conservatory support, tutoring/mentoring at after school programs and camps, community gardening, nature area monitoring and stewardship, and docent programs).

For more information, visit:  
[www.chicagoparkdistrict.com/volunteer](http://www.chicagoparkdistrict.com/volunteer).



The mission of Friends of the Parks (FOTP) is to preserve, protect, improve and promote the use of Chicago's parks, preserves, and recreational areas for the benefit of all neighborhoods and citizens.

Friends of the Parks (**FOTP**):

- ♦ Provides support to neighborhood park advisory councils.
- ♦ Works with volunteers on park cleanup and beautification projects.
- ♦ Offers park tours and lectures in an effort to increase park awareness and participation.
- ♦ Established the Public Trust Program to ensure that proposed development on public park lands and lakefront is in compliance with the Lake Michigan and Chicago Lakefront protection ordinance.

For more information, visit: [www.fotp.org](http://www.fotp.org).

# PRIVATIZED CONTRACTS

The Chicago Park District owns the largest municipal harbor system in North America, consisting of 11 harbors with over 5,500 boat slips and moorings. Harbors have appeared prominently in lakefront planning and development since the creation of Burnham and Bennett's plan of 1909. The harbors are managed by Westrec Marina.

Located in the Bronzeville neighborhood on Chicago's south side, the 31st Street Harbor incorporates extensive new community amenities and a 1,000 boat slip marina. The 1,200 foot long breakwater will also create a new underwater habitat and provide opportunities for fishing.



The Chicago Park District accommodates 6 golf courses, 3 driving ranges, and 1 miniature golf course, all managed by Billy Casper Golf. The facilities offer picturesque views of the City and Lake Michigan.



Soldier Field, one of Chicago's most famous landmarks, opened in 1924 and is the home to the beloved Chicago Bears. The stadium has a long history of hosting exciting sports and special events including the Coors Outdoor Stadium Series featuring the Chicago Blackhawks and the most attended rugby game in the United States featuring the New Zealand All Blacks against the USA Eagles. This monument is nestled in the city's museum campus.

The surrounding 17-acre park is home to beautifully landscaped grounds and family areas such as the Children's Garden, Sledding Hill, and Veterans Memorial. Soldier Field is managed by Sports Management Group (SMG). Soldier Field is the first North American Stadium to receive the award of LEED-EB (Leadership in Energy and Environmental Design-Existing Building) Certification and the first NFL stadium to receive the prestigious award.

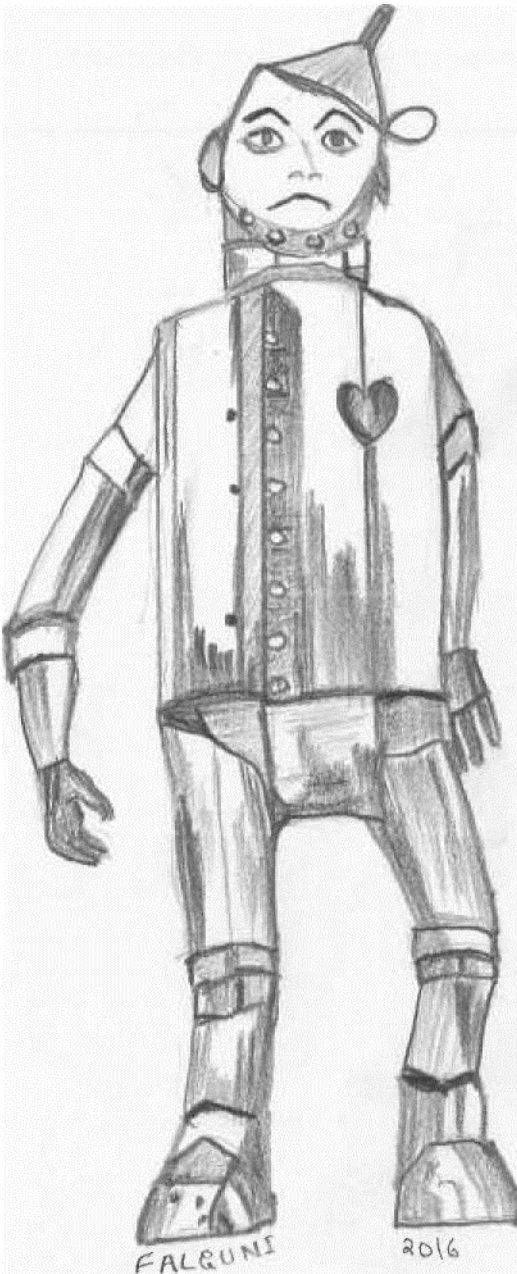




## FEATURED PARKS

# Oz Park

*Located at 2021 N. Burling St. Chicago, Illinois 60614*



Drawing by Falguni Desai,  
Comptroller's Office



## CONTACT US

### Administration:

541 N. Fairbanks  
Chicago, IL 60611

[www.chicagoparkdistrict.com](http://www.chicagoparkdistrict.com)

(312) 742-PLAY

(312) 742-7529

### Special Event Venues

(312) 742-4847

### Privatized Contracts:

Park Concessions Management

(312) 750-1035

Sport Management Group (Soldier Field)

(312) 235-7000

Westrec Marinas Inc. (Harbors)

(312) 742-8520

Billy Casper Golf (All Locations)

(312) 245-0909

MLK Entertainment Center

(312) 747-2602

Standard Parking

(877) 638-3716

### Museum Partners:

John G. Shedd Aquarium

(312) 939-2438

DuSable Museum of African American History

(312) 947-0600

Adler Planetarium and Astronomy Museum

(312) 922-7827

Field Museum of Natural History

(312) 922-9410

Museum of Science and Industry

(312) 684-1414

Art Institute of Chicago

(312) 443-3600

National Museum of Mexican Art

(312) 738-1503

Peggy Notebaert Nature Museum

(312) 755-5100

Museum of Contemporary Art

(312) 280-2660

Chicago History Museum

(312) 642-4600

Institute of Puerto Rican Arts and Culture

(773) 486-8345

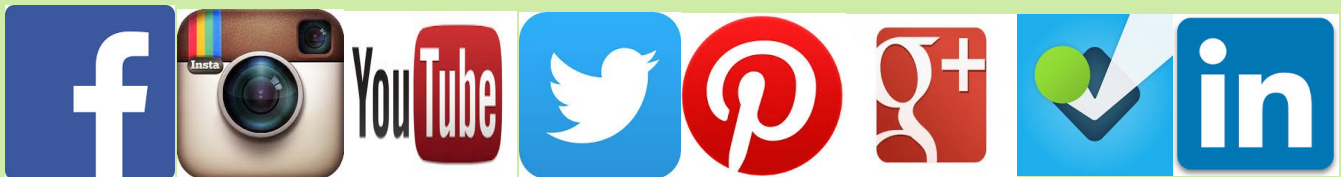
### Friends of the Park:

(312) 857-2757

### Chicago Parks Foundation:

(312) 742-4781

For more information, please use any of the following communication options:



**Email:** Sign—up to receive monthly or quarterly newsletters. Go to the Chicago Park District website and click on “contact us” to submit your information.